

LYNN TOWNSHIP

Each township has six files containing six sections in each, and one file containing all 36 sections.

Lynn01to06.pdf
Lynn07to12.pdf
Lynn13to18.pdf
Lynn19to24.pdf
Lynn25to30.pdf
Lynn31to36.pdf
LynnAll36.pdf

The points are listed starting with the point above the SE corner and continuing in a counter-clockwise rotation around the section. This normally begins with the East point, Northeast, then North, but may also include Witness Corners, and/or Meander Corners.

Definitions

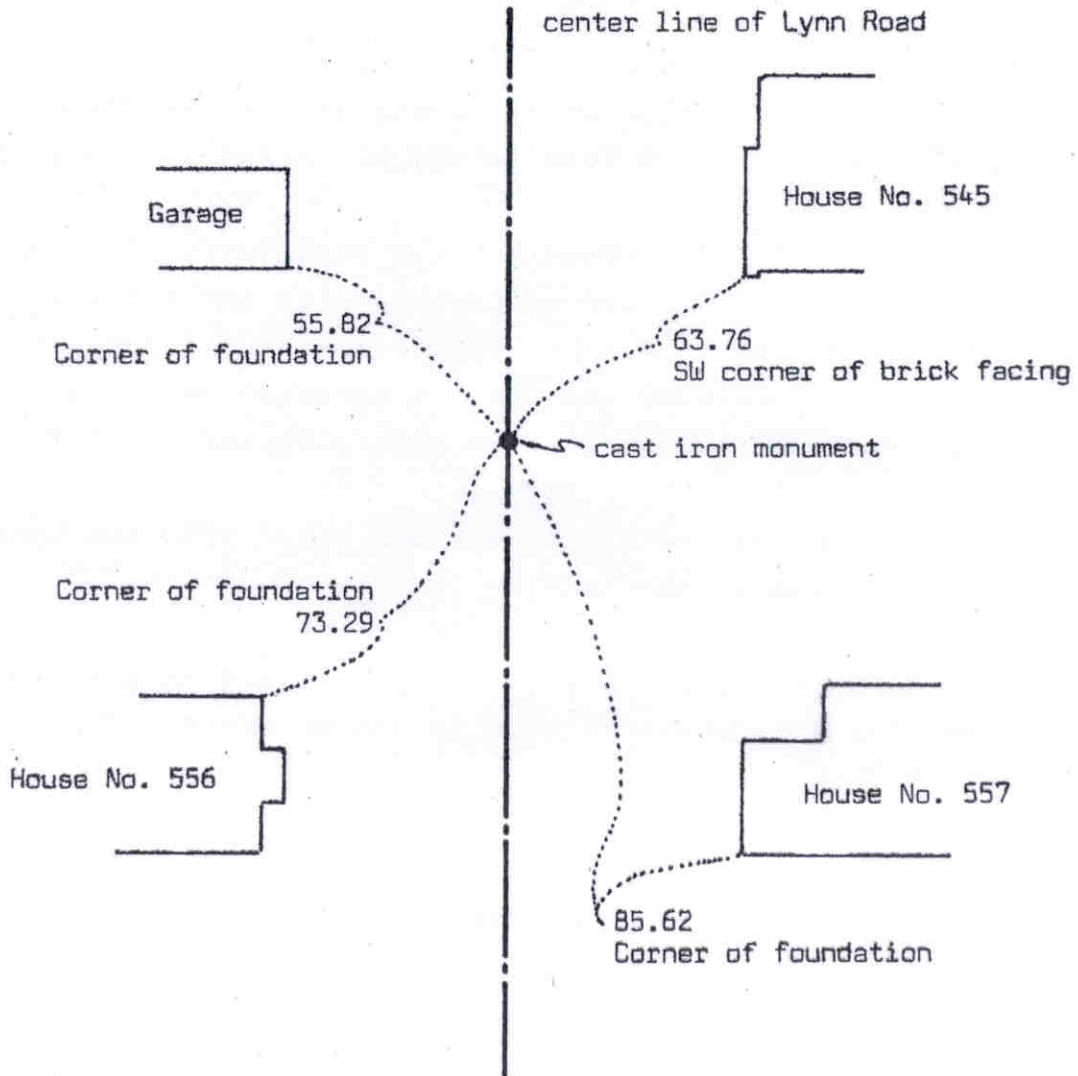
Witness Corner: A witness corner “stands in” when the true corner cannot be monumented or occupied because of difficult terrain or obstruction of the corner sight. The witness corner must be on the section line and is usually 5 or 10 chains away from the true corner.

Meander Corner: The intersection of a township, range, or section line and the banks of a navigable stream or meandering body of water.

Certificate of Location of Government Corner



SKETCH OF REFERENCE TIES
(NO SCALE)



Statement of evidence relative to this corner location on sheet 2

I hereby certify that this document was prepared by me or under my direct supervision.

Willard Pellinen

Willard Pellinen
McLeod County Surveyor
License No. 9626

Date 7/21/89

OFFICE OF THE COUNTY RECORDER
MCLEOD COUNTY, MINNESOTA.

I hereby certify that this document was filed in this office at 2 o'clock P.M. on the 27th day of July, 19 89.

Carmin Potlie, County Recorder

By _____, Deputy

Document No. 229183

EAST QUARTER corner, Section 1, Township 116 North, Range 30 West

Certificate of Location of Government Corner

This corner was originally established by the government in 1855. John Ryan set a post and had reference ties to two bearing trees.

1940. E.L.Higgins survey shows a $2\frac{1}{2}$ inch by 3 foot long iron pipe with a 4 inch diameter brass cap at the corner. He had a distance of 2636.75 feet to the southeast corner of Section 1.

December, 1968. McCombs Knutson Associates (Dickman Knutson, County Surveyor) found an iron pipe at the corner. This was not the monument shown on Higgins' survey. The street has been improved since 1940 and the old monument destroyed. Knutson replaced the found iron pipe with a McLeod County cast iron monument. They had a distance of 2637.65 feet to the southeast corner of the section. This point fits the monumentation on each side of the section line fairly well.

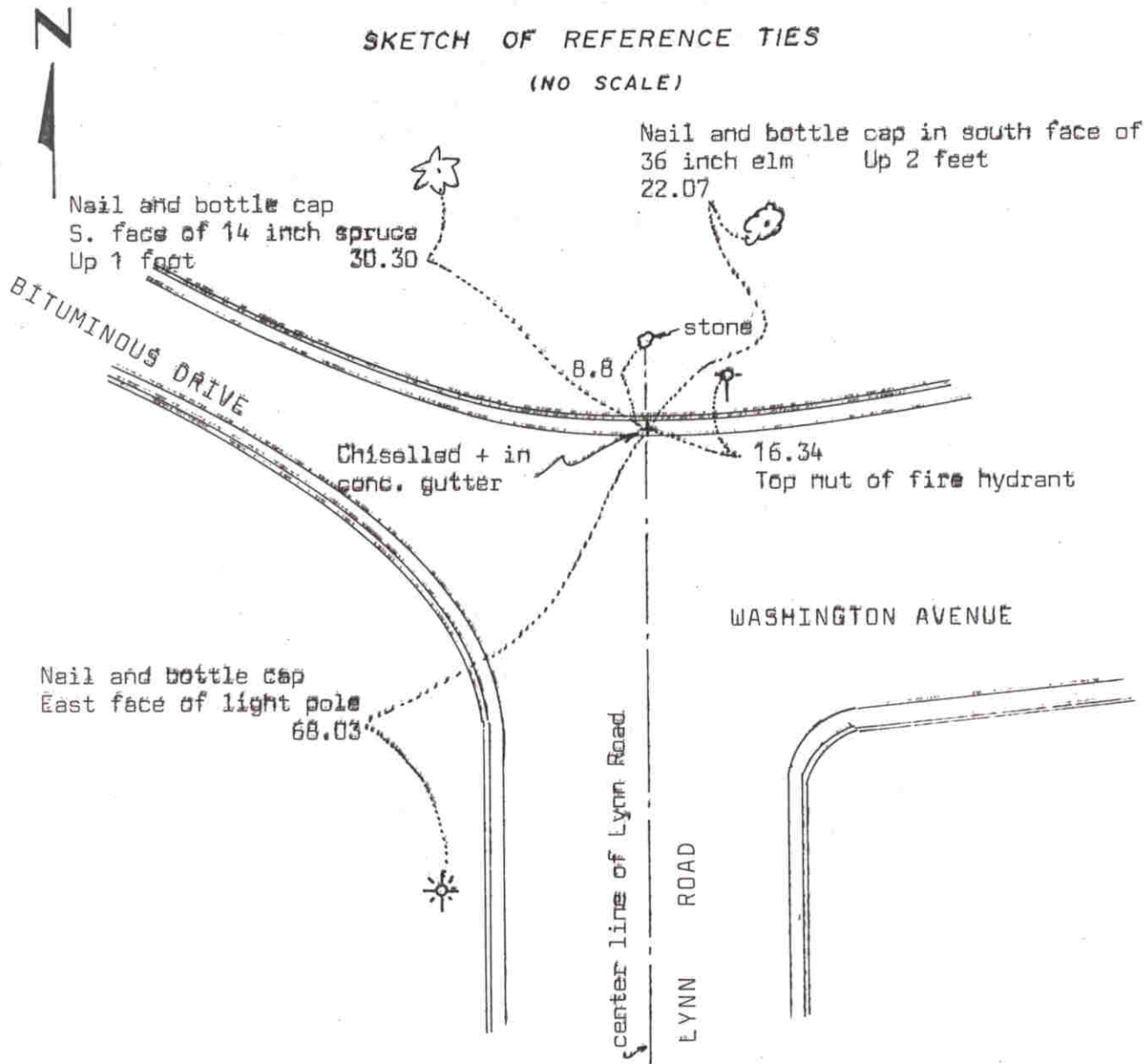
February 24, 1989. We found the monument in good condition and took new reference ties to the monument.

We believe the iron pipe found by Knutson was set in the same location as the monument Higgins had and has perpetuated the true location of the quarter corner.

Certificate of Location of Government Corner

SKETCH OF REFERENCE TIES

(NO SCALE)



Statement of evidence relative to this corner location on sheet 2

I hereby certify that this document was prepared by me or under my direct supervision.

Willard Pellinen
 Willard Pellinen
 McLeod County Surveyor
 License No. 9626

Date 7/25/89

OFFICE OF THE COUNTY RECORDER
 MCLEOD COUNTY, MINNESOTA.

I hereby certify that this document was filed in this office at 2 o'clock P.M. on the 27th day of July, 1989.

Garman Ostlie, County Recorder
 By _____, Deputy

Document No. 229182

NORTHEAST corner, Section 1, Township 116 North, Range 30 West

Certificate of Location of Government Corner

This corner was originally established by the government in 1855. John Ryan set a post and had reference ties to 2 bearing trees.

September 1934 survey notes show a stone at this corner with reference ties.

Lew Merrill, county surveyor from 1943 to 1955 said there is a stone at the corner, but didn't know if it was on the standard parallel.

June 3, 1970. McCombs Knutson Associates (Dickman Knutson, county surveyor) found the stone and set a chiselled + on the concrete gutter, on the standard parallel, 8.8 feet south of the stone. They set the + on the east line of the Northeast Quarter of Section 6, which also is the center line of Lynn Road.

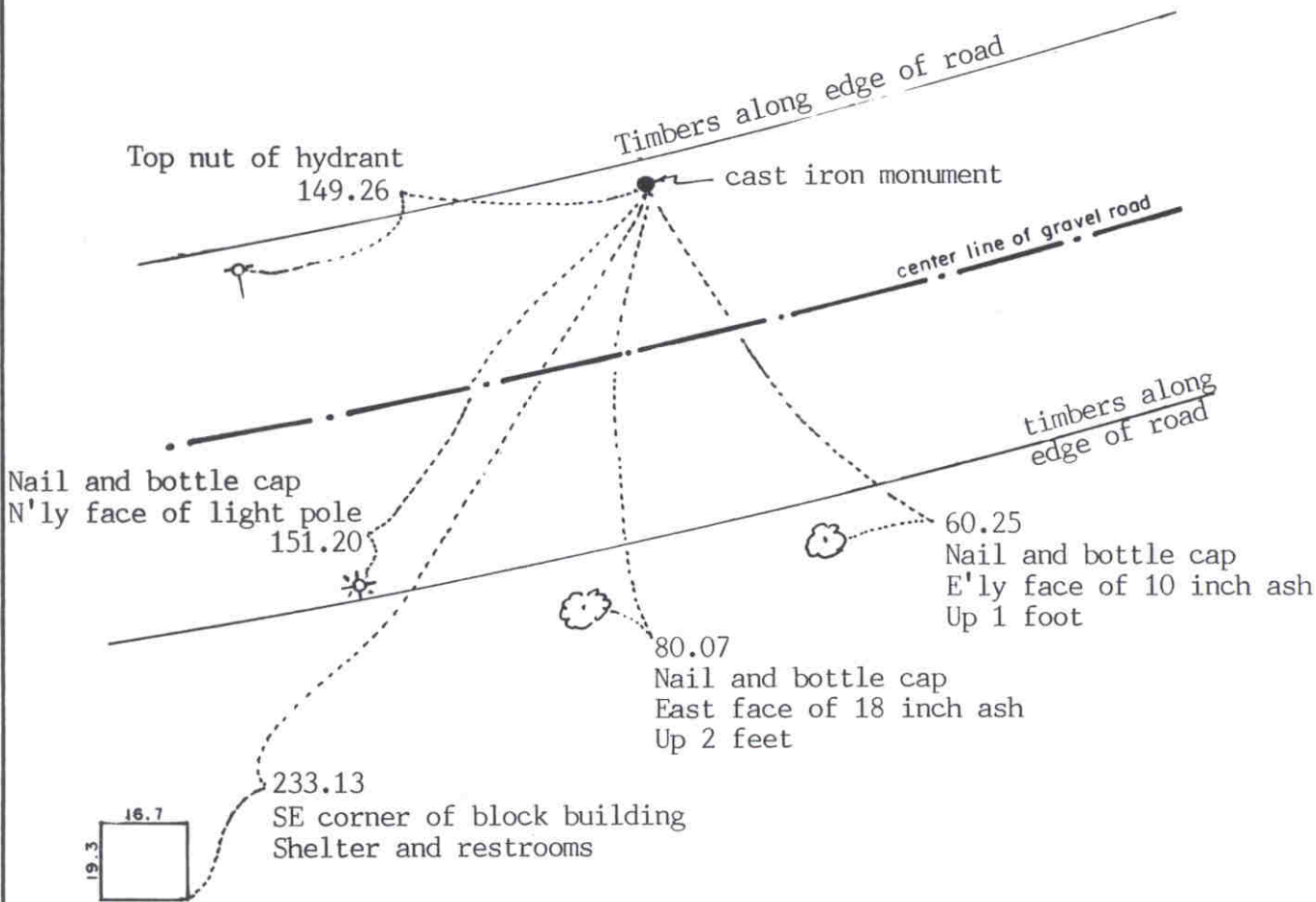
February 24, 1989. We found the + in the concrete gutter and took new reference ties.

We believe the stone has perpetuated the northeast corner location as set by the government and the chiselled + in the concrete is the correct location for the corner.

Certificate of Location of Government Corner

SKETCH OF REFERENCE TIES

(NO SCALE)



Statement of evidence relative to this corner on sheet 2

I hereby certify that this document was prepared by me or under my direct supervision.

Willard Pellinen
Willard Pellinen
McLeod County Surveyor
License No. 9626.

Date February 3, 1991

OFFICE OF THE COUNTY RECORDER
MCLEOD COUNTY, MINNESOTA.

I hereby certify that this document was filed in this office at 9 o'clock A.M. on the 7th day of Feb, 1991.

Carmen Ollie, County Recorder.

By _____ Deputy.

Document No. 237434

NORTH QUARTER corner, Section 1, Township 116 North, Range 30 West

Certificate of Location of Government Corner

This corner was not set by the original government survey.

1967. Lew Merrill, former county surveyor, said there is a re-rod at the corner. This was set in place of an old wood post.

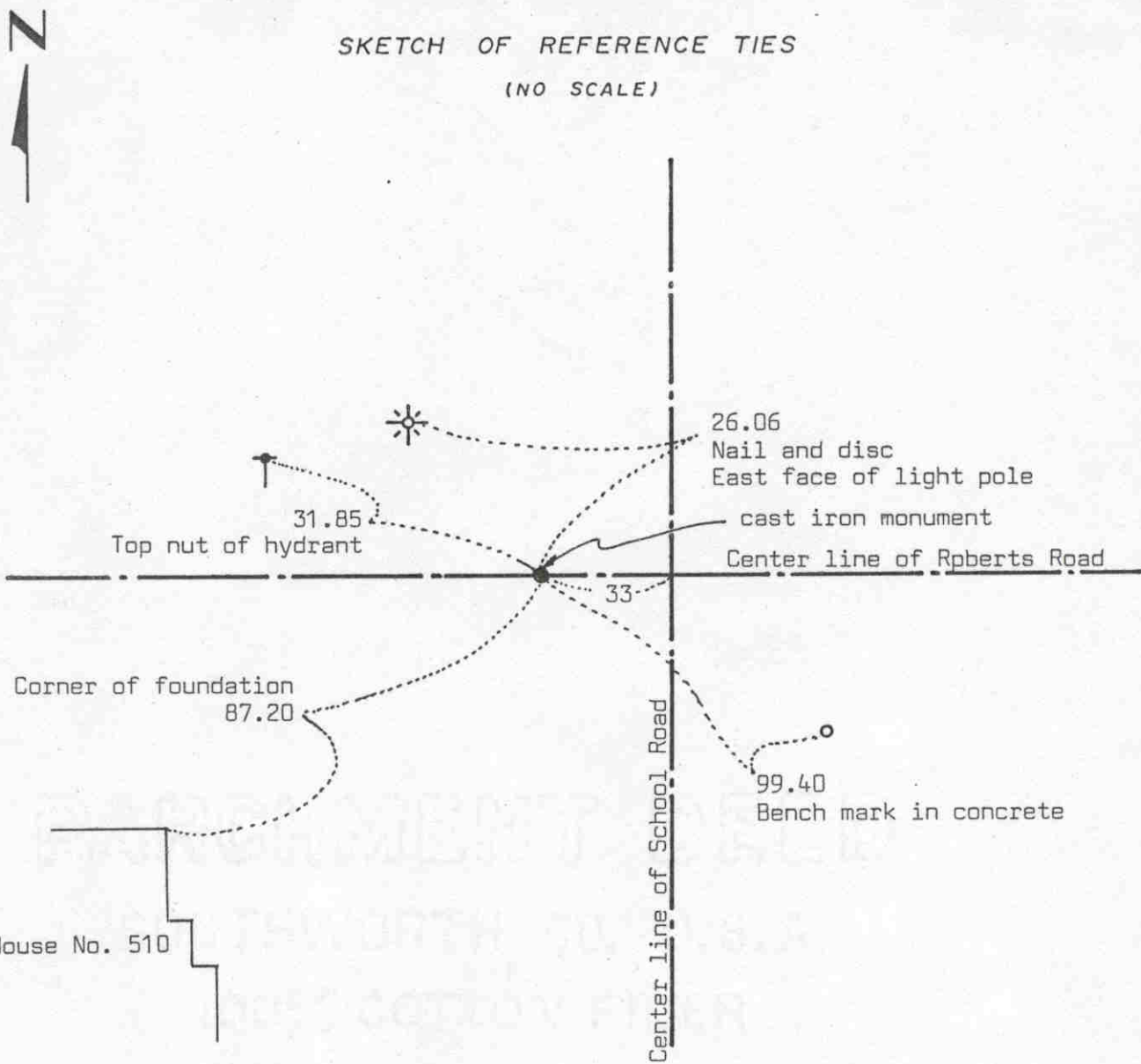
1968. McCombs Knutson Associates (Dickman Knutson, county surveyor) found the re-rod and replaced it with a McLeod County cast iron monument and took reference ties.

1984. We found the monument and found it on line with the southeast corner of Section 31 and the south quarter corner of Section 31, Township 117, Range 30.

February 21, 1990. No old reference ties remaining. We found the cast iron monument using our old distances and bearings to the corner. We took new reference ties.

Certificate of Location of Government Corner

SKETCH OF REFERENCE TIES
(NO SCALE)



Statement of evidence relative to this corner location on sheet 2

I hereby certify that this document was prepared by me or under my direct supervision.

Willard Pellinen
 Willard Pellinen
 McLeod County Surveyor
 License No. 9626
 Date 7/26/89

OFFICE OF THE COUNTY RECORDER
MCLEOD COUNTY, MINNESOTA.

I hereby certify that this document was filed in this office at 9 o'clock A.M. on the 15th day of Aug, 1989.

Armen (Pattie), County Recorder
 By _____, Deputy

Document No. 229469

Certificate of Location of Government Corner

This corner was originally established by the government in 1855. Thomas Simpson set a post, erected a mound with trench and pits, set charcoal stake and planted osage orange seeds at NE and SW corners of mound.

1938. E.L.Higgins' survey shows an iron stake at the corner. He had a distance of 2676 feet to the southeast corner and a distance of 2578 feet to the northeast corner of the section.

1967. McCombs Knutson Associates found an iron stake at the corner. (Dickman Knutson, county surveyor) They had a distance of 2670.31 to the southeast corner and a distance of 2576.3 feet to the northeast corner of the section.

Knutson replaced the iron stake with a McLeod County cast iron monument. Lew Merrill, county surveyor from 1943 to 1955, said this iron stake found by Knutson was the same stake, or at least in the same location, as the stake used by Higgins in 1938.

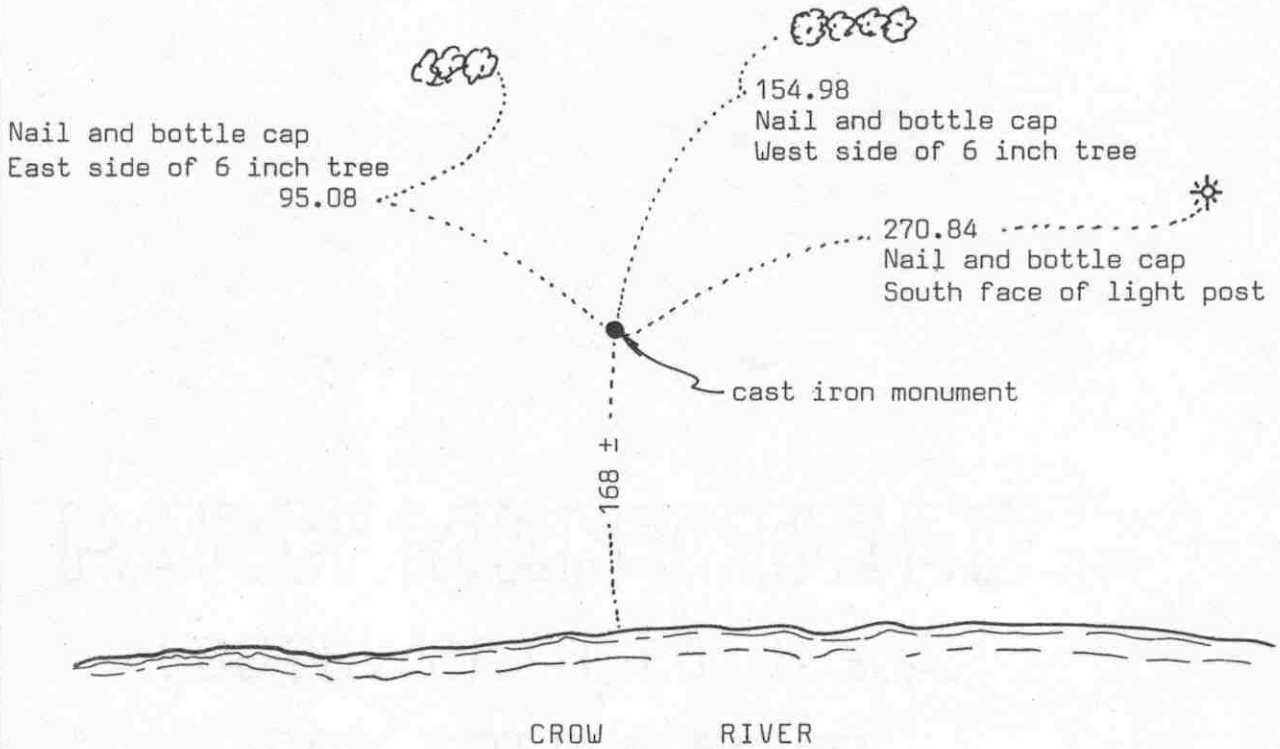
February 24, 1989. We found the cast iron monument and took new reference ties.

We believe the iron stake found by Knutson had perpetuated the true quarter corner.

Certificate of Location of Government Corner



SKETCH OF REFERENCE TIES (NO SCALE)



Statement of evidence relative to this corner location on sheet 2

I hereby certify that this document was prepared by me or under my direct supervision.

Willard Pellinen
Willard Pellinen
McLeod County Surveyor
License No. 9626

Date 8/1/89

OFFICE OF THE COUNTY RECORDER
MCLEOD COUNTY, MINNESOTA.

I hereby certify that this document was filed in this office at 9 o'clock A.M. on the 15th day of Aug 19 89.

Carmen Potlie, County Recorder
By _____, Deputy

Document No. 229468

Certificate of Location of Government Corner

This corner was established in 1855 by the Government Land Office. John Ryan "set post, erected mound with trench and pits, charred stake and osage orange seeds at each angle. He had a distance of 15.83 chains (1044.78 feet to the southwest corner of Section 36, Township 117, Range 30.

1938 survey by E.L.Higgins shows a distance of 1046.3 feet to the southwest corner of Section 36 and a distance of 2640 feet to the north quarter corner of Section 2.

1967. Lew Merrill said there is a wood post at the corner which has been used by himself and by E.L.Higgins. Merrill was the county surveyor from 1943 to 1955.

1968. McCombs Knutson Associates (Dickman Knutson, county surveyor) found a wood post at the corner and replaced it with a McLeod County cast iron monument. They had a distance of 1044.43 feet to the southwest corner of section 36 and a distance of 2639.89 feet to the north quarter corner of Section 2.

1979. Corner was destroyed by grading.

January 24, 1980. All old reference ties destroyed. We set an iron pipe at the corner using distances from old surveys.

July 8, 1980. We replaced the iron pipe with a McLeod County cast iron monument and took reference ties.

February 24, 1989. We found the monument in good condition and the reference ties good.

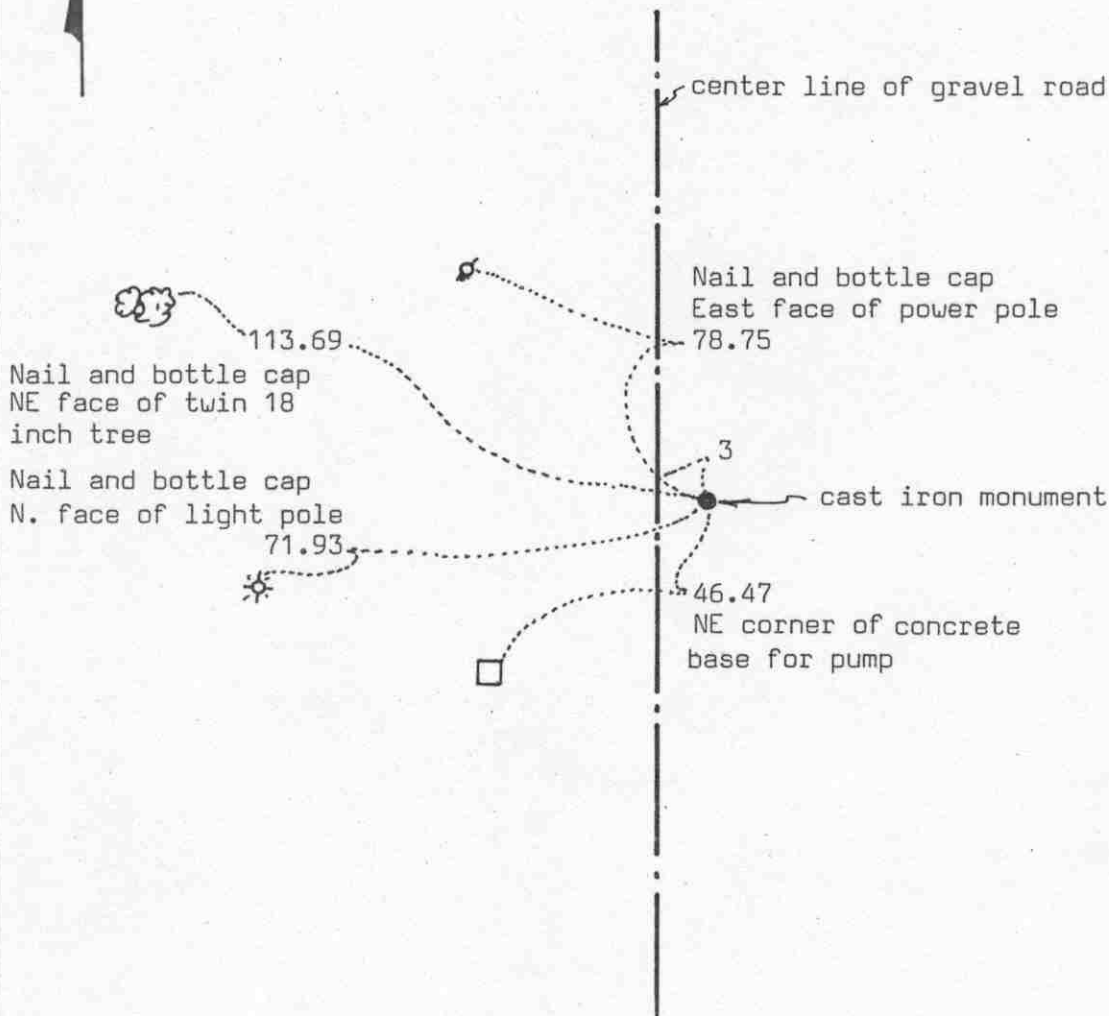
We believe the correct location of this corner had been perpetuated by the wood post used by Higgins and Merrill.

Certificate of Location of Government Corner



SKETCH OF REFERENCE TIES

(NO SCALE)



Statement of evidence relative to this corner location on sheet 2

I hereby certify that this document was prepared by me or under my direct supervision.

Willard Pellinen

Willard Pellinen
McLeod County Surveyor
License No. 9626

Date 8/5/89

OFFICE OF THE COUNTY RECORDER
MCLEOD COUNTY, MINNESOTA.

I hereby certify that this document was filed in this office at 9 o'clock A.M. on the 15th day of Aug, 19 89.

Carmen Dettie, County Recorder

By _____, Deputy

Document No. 229471

EAST QUARTER corner, Section 3, Township 116 North, Range 30 West

Certificate of Location of Government Corner

This corner was established in 1855 by the General Land Office. Thomas Simpson "set quarter section post in mound with trench, pits, charred stake and osage orange seeds northeast and southwest.

1938. Survey by E.L.Higgins shows an iron stake at this corner with a distance of 2667.5 feet to the southeast corner.

1967. Lew Merrill said there is an iron stake at the corner east of the township road. Lew Merrill is a former county surveyor.

August 13, 1968. McCombs Knutson Associates (Dickman Knutson, county surveyor) found a 1 inch diameter iron pin at the corner, east of the township road. The road curves west to miss a barn. Knutson replaced the iron pin with a McLeod County cast iron monument.

November 23, 1983. We reset a cast iron monument at the corner. Old corner was destroyed by road construction. Road was straightened.

December 23, 1986. We took new ties to power pole. Old power pole had been replaced.

February 23, 1989. We found the cast iron monument in good condition and the reference ties good.

We believe the iron pin found by Knutson was the same iron used by Higgins in 1938 and that it had perpetuated the correct location of the quarter corner.

Witness corner to
NORTHEAST

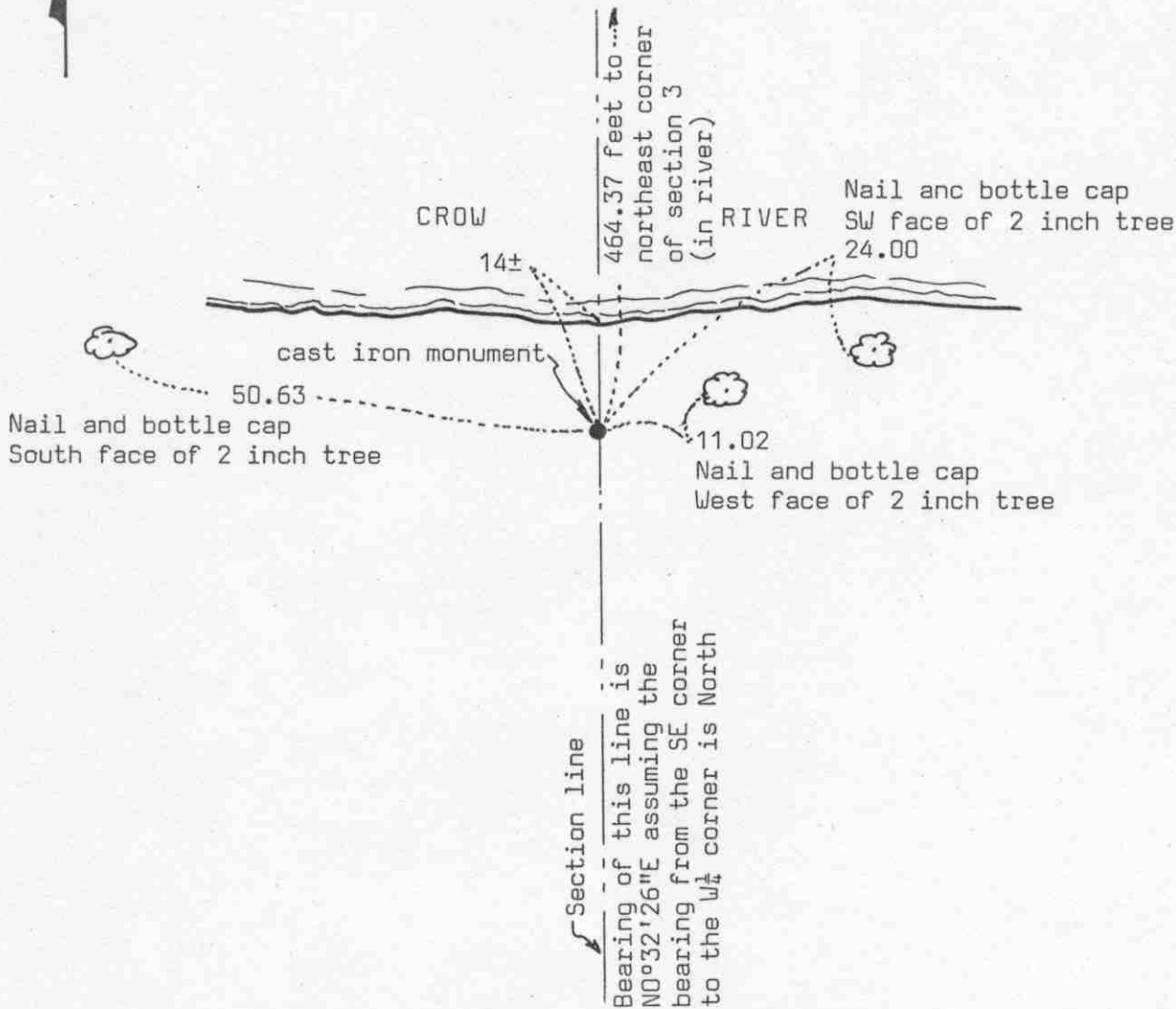
corner, Section 3, Township 116 North, Range 30 West

Certificate of Location of Government Corner



SKETCH OF REFERENCE TIES

(NO SCALE)



Statement of evidence relative to this corner location on sheet 2

I hereby certify that this document was prepared by me or under my direct supervision.

Willard Pellinen

Willard Pellinen
McLeod County Surveyor
License No. 9626

Date 8/5/89

OFFICE OF THE COUNTY RECORDER
MCLEOD COUNTY, MINNESOTA.

I hereby certify that this document was filed in this office at 9 o'clock A.M. on the 15th day of Aug, 19 89.

Carmen Dotlie, County Recorder
By _____, Deputy

Document No. 229470

Witness corner to

NORTHEAST corner, Section 3, Township 116 North, Range 30 West

Certificate of Location of Government Corner

The northeast corner of Section 3 was originally established in 1855 by Thomas Simpson of the General Land Office. He set post, erected mound with trench and pits, charred stake and osage orange seeds at each angle.

This corner is now in the river due to the dam in Hutchinson.

1978. We found a wood post along the section line with a 3/4 inch iron pipe beside it. We ran a line from the east quarter corner through this post and intersected the north line of the section. We had a distance of 1017.63 feet to the southwest corner of Section 35, Township 117, Range 30. Government distance was 15.70 chains (1036.2 feet), but prorating Government distance from east quarter corner of Section 3 to Northeast corner and distance to southwest corner of Section 35, our distance of 1017.63 is very nearly exact.

July 8, 1980. We replaced the wood post with a McLeod County cast iron monument and left the iron pin in place, north of the monument. Wood post was flush with top of ground, 2 feet long, 3 inch diameter, with a sharp point. We took reference ties to the monument.

February 24, 1989. We found the monument in good condition and the reference ties good.

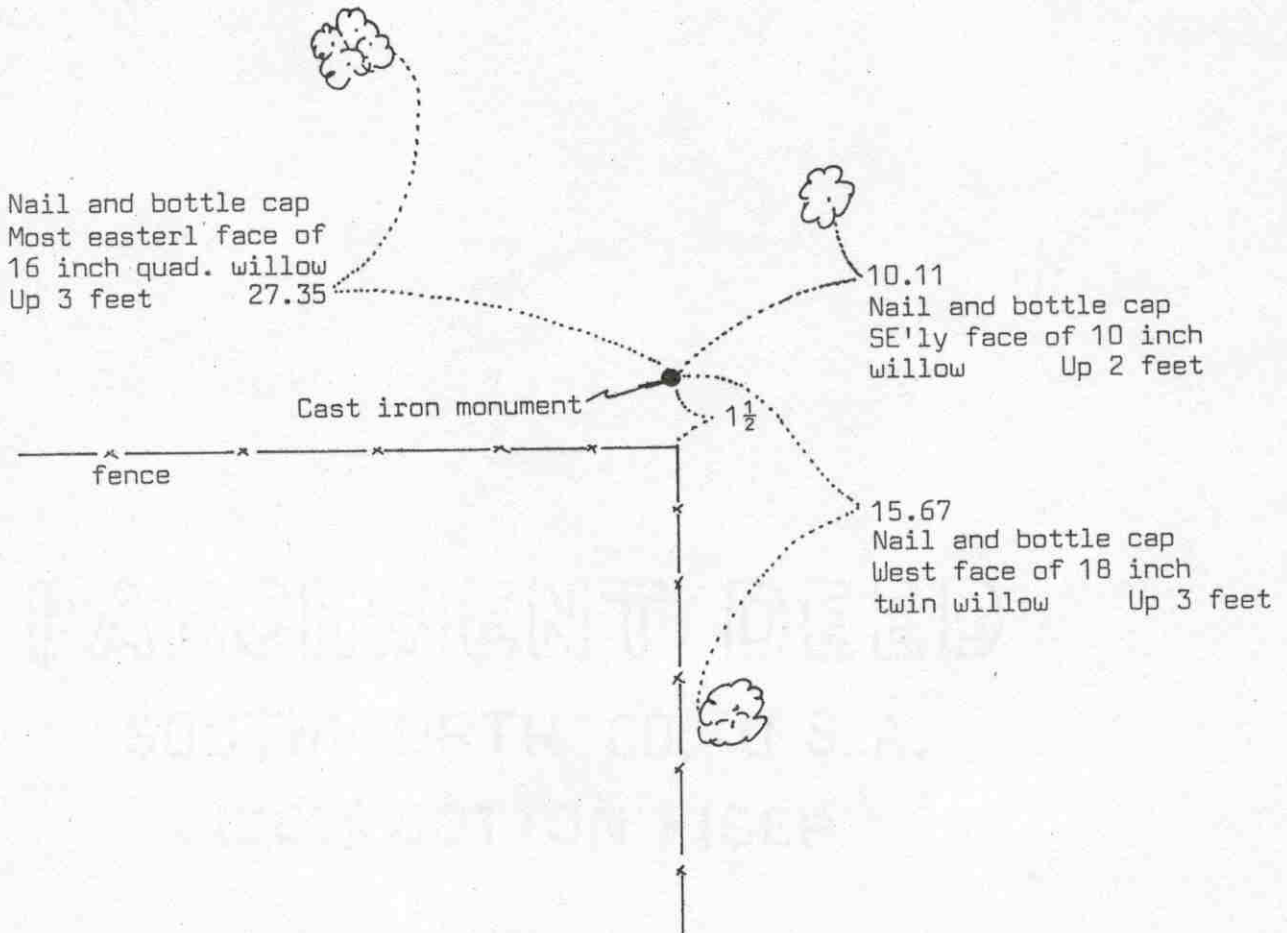
We don't know who set the wood post and iron pin, but since the distance hits so close to the government distance, we feel the post has perpetuated the section line.

Certificate of Location of Government Corner



SKETCH OF REFERENCE TIES

(NO SCALE)



Statement of evidence relative to this corner location on sheet 2

I hereby certify that this document was prepared by me or under my direct supervision.

Willard Pellinen

Willard Pellinen
McLeod County Surveyor
License No. 9626

Date 7/29/89

OFFICE OF THE COUNTY RECORDER
MCLEOD COUNTY, MINNESOTA.

I hereby certify that this document was filed in this office at 9 o'clock A.M. on the 15th day of Aug, 19 89.

Carmen Potlie, County Recorder

By _____, Deputy

Document No. 229472

Certificate of Location of Government Corner

June 13, 1967. Virgil Prieve said fence corner marks the north quarter corner of Section 3. He has lived in the Northeast Quarter of Section 3 for 52 years and his father lived there all his life. His father told him the fence corner was the correct corner.

December 1968. McCombs Knutson Associates (Dickman Knutson, county surveyor) measured the north line of Section 3 and called the fence intersection the corner. In May 1969, they found an iron pin and a wood stake $1\frac{1}{2}$ feet north of the fence corner and they replaced the pin with a McLeod County cast iron monument. Lew Merrill, county surveyor from 1943 to 1955, said there was an iron pin at the corner at the fence intersection.

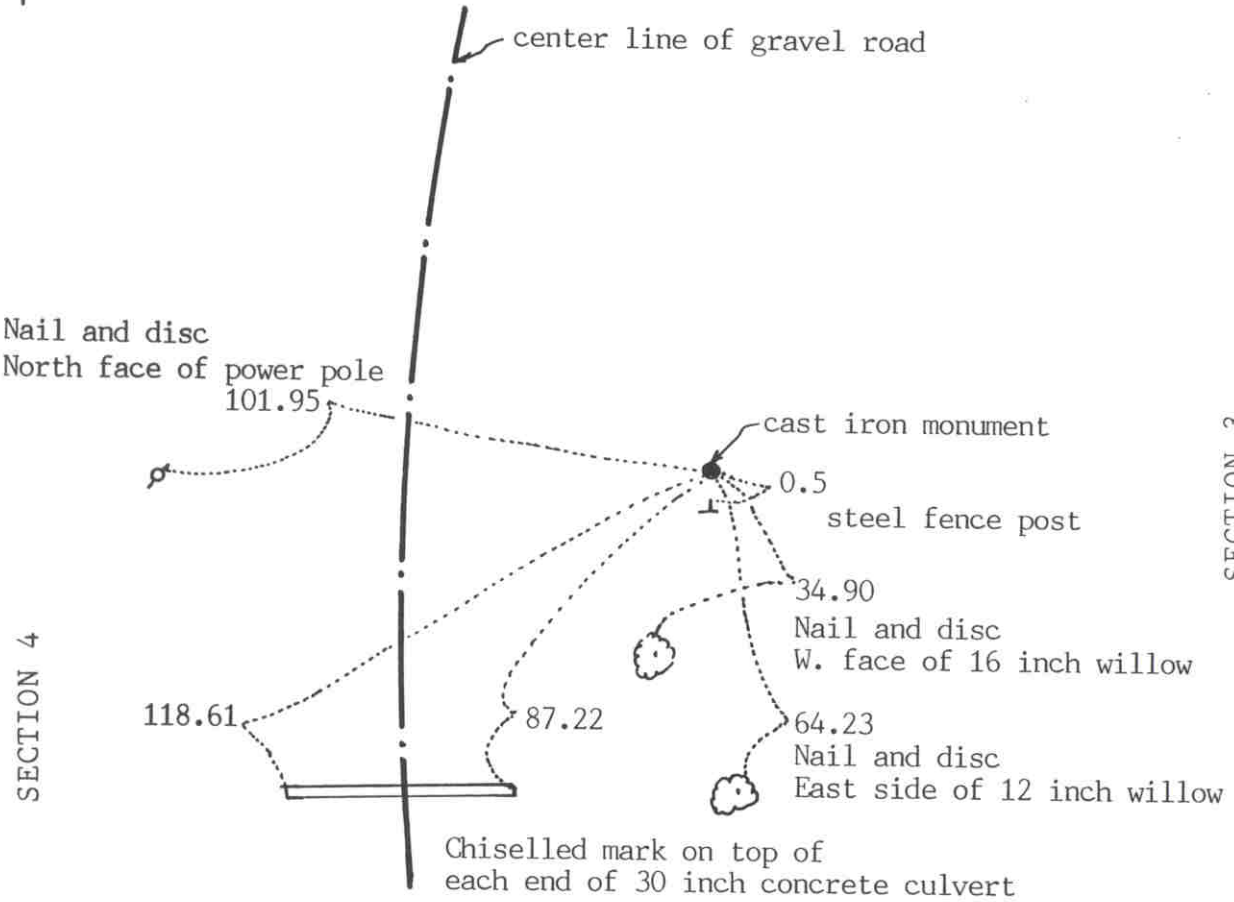
February 24, 1989. We found the cast iron monument in good condition down 6 inches below the surface. We took new reference ties, only one old tie remaining.

We believe the iron pin at the fence corner had perpetuated the correct location of the quarter corner.

Certificate of Location of Government Corner

SKETCH OF REFERENCE TIES

(NO SCALE)



SECTION 4

SECTION 3

Statement of evidence relative to this corner on sheet 2

I hereby certify that this document was prepared by me or under my direct supervision.

Willard Pellinen
Willard Pellinen
McLeod County Surveyor
License No. 9626.

Date February 3, 1991

OFFICE OF THE COUNTY RECORDER
MCLEOD COUNTY, MINNESOTA.

I hereby certify that this document was filed in this office at 9 o'clock A.M. on the 7th day of Feb, 1991.

Carmen Ostlie, County Recorder.
By _____ Deputy.

Document No. 237435

Certificate of Location of Government Corner

August, 1855. The Government notes show this corner was set by Thomas Simpson. He set a post in a mound of earth, with trench and pits and charred state and he planted osage orange seeds at the northeast and southwest corners of the mound.

April 19, 1972. McCombs Knutson Associates (Dickman Knutson, county surveyor) found a wood post on the easterly extension of a fence to the west and on the northerly extension of the center line of a gravel road to the south. Knutson set an iron pipe and took reference ties.

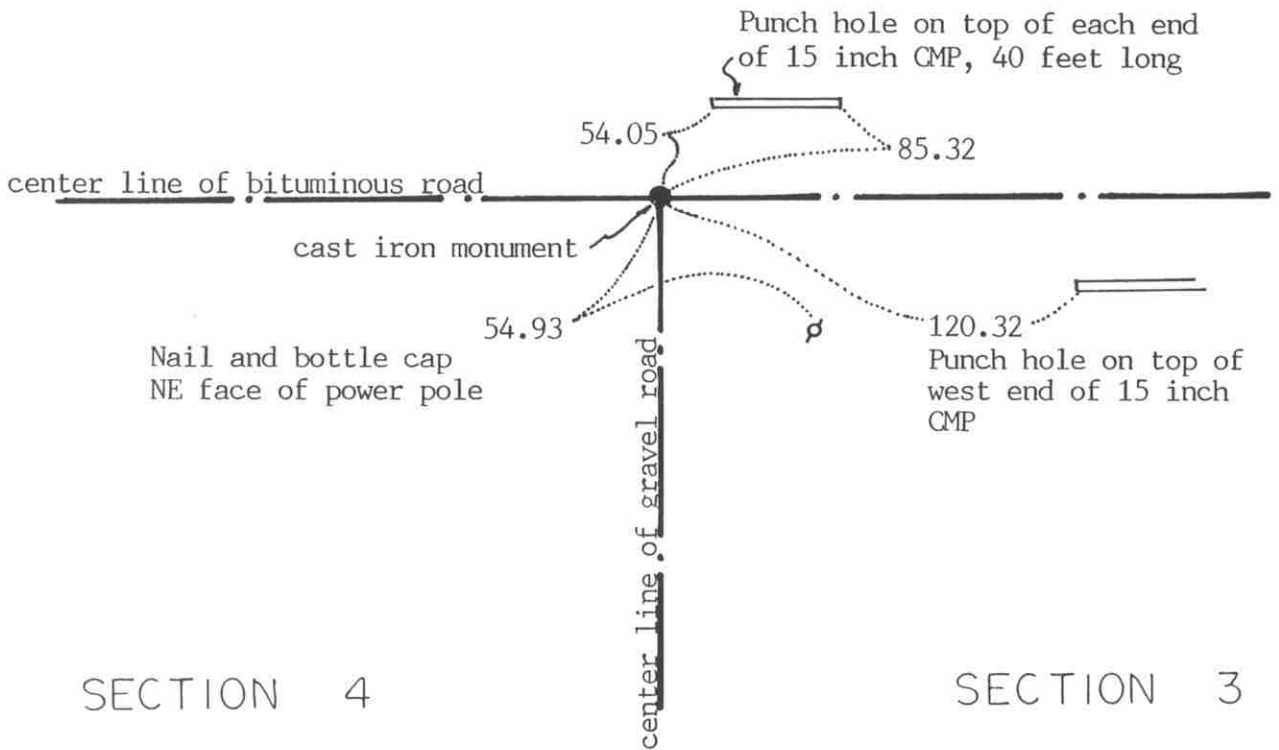
August 5, 1974. Knutson replaced the iron pipe with a McLeod County cast iron monument.

February 21, 1990. We found the monument in good condition and checked the reference ties.

NORTHEAST corner, Section 4, Township 116 North, Range 30 West

Certificate of Location of Government Corner

SKETCH OF REFERENCE TIES (NO SCALE)



Statement of evidence relative to this corner location on sheet 2

I hereby certify that this document was prepared by me or under my direct supervision.

Willard Pellinen
Willard Pellinen
McLeod County Surveyor
License No. 9626

Date January 2, 1993

OFFICE OF THE COUNTY RECORDER
MCLEOD COUNTY, MINNESOTA.

I hereby certify that this document was filed in this office at 9 o'clock A.M. on the 6th day of January, 1993.

Carmen Estlie Mulder, County Recorder

By _____, Deputy

Document No. 249896

NORTHEAST _____ corner, Section 4, Township 116 North, Range 30 West

Certificate of Location of Government Corner

August, 1855. This corner was originally established by the General Land Office. Thomas Simpson set a post, erected mound with trench and pits, charred stake and osage orange seeds at each angle.

October, 1938. The county highway department assumed the corner at the center line intersection of the roads and set an iron pin.

November 21, 1968. McCombs Knutson Associates (Dickman Knutson, county surveyor) found an iron pin at the center line intersection of the roads. They reset the corner to be on the standard parallel.

1970. Knutson set a McLeod County cast iron monument and took reference ties.

November 6, 1987. We found the monument in good condition and new reference ties. All the old ties had been destroyed.

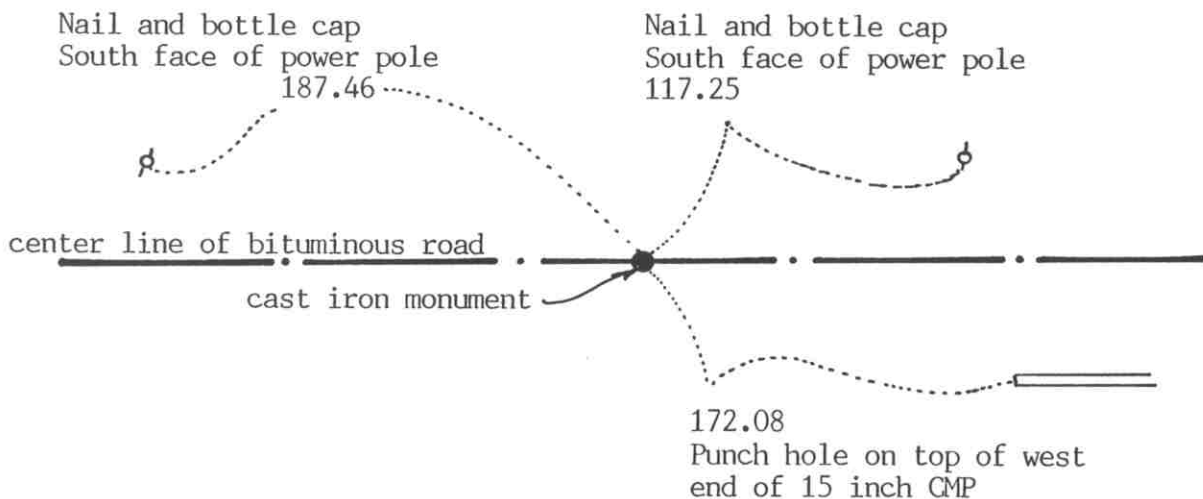
December 1, 1992. We found the monument in good condition and checked the reference ties.

The monument set by Knutson is accepted as marking the section corner. It fits occupation lines, the center line intersection of the roads and perpetuates the location of the iron pin which was set in 1938.

NORTH QUARTER corner, Section 4, Township 116 North, Range 30 West

Certificate of Location of Government Corner

SKETCH OF REFERENCE TIES
(NO SCALE)



Statement of evidence relative to this corner location on sheet 2

I hereby certify that this document was prepared by me or under my direct supervision.

Willard Pellinen

Willard Pellinen
McLeod County Surveyor
License No. 9626

Date January 2, 1993

OFFICE OF THE COUNTY RECORDER
MCLEOD COUNTY, MINNESOTA.

I hereby certify that this document was filed in this office at 9 o'clock A.M. on the 6th day of January, 1993.

Carmen Ostlie-Julder, County Recorder

By _____, Deputy

Document No. 249897

Certificate of Location of Government Corner

November 21, 1968. McCombs Knutson Associates (Dickman Knutson, county surveyor) found an iron pin on the center line of the east-west road. This was within a foot of being half way between the northeast and northwest corners of Section 4.

1970. Knutson replaced the iron pin with a McLeod County cast iron monument. Knutson moved the corner a few tenths of a foot to be on the standard parallel.

November 6, 1987. We found no reference ties remaining. We found the monument in good condition down 3 inches below the surface of the road and took new reference ties.

December 1, 1992. We found the monument in good condition and checked the reference ties.

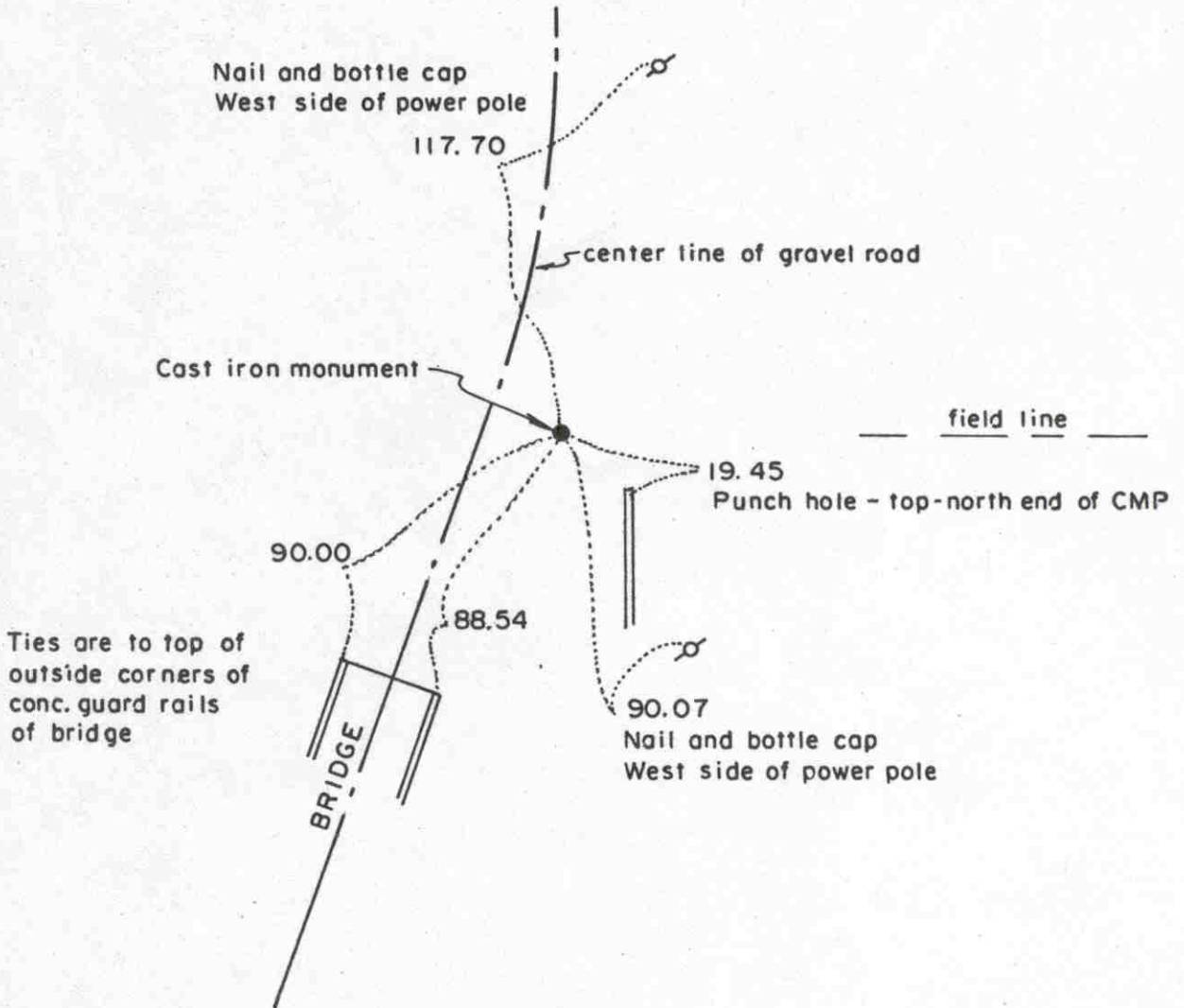
The monument set by Knutson is accepted as marking the quarter corner. It fits occupation line, the center line of the east-west road and it perpetuates the location of an older monument.

Certificate of Location of Government Corner



SKETCH OF REFERENCE TIES

(NO SCALE)



Ties are to top of outside corners of conc. guard rails of bridge

Statement of evidence relative to this corner location on sheet 2

I hereby certify that this document was prepared by me or under my direct supervision.

Willard Pellinen

Willard Pellinen
McLeod County Surveyor
License No. 9626

Date 2/4/89

OFFICE OF THE COUNTY RECORDER
MCLEOD COUNTY, MINNESOTA.

I hereby certify that this document was filed in this office at 3 o'clock P.M. on the 9th day of Feb, 1989.

Carmen Ostlie, County Recorder

By _____, Deputy

Document No. 226882

EAST QUARTER corner, Section 5, Township 116 North, Range 30 West

Certificate of Location of Government Corner

This corner was originally set by Thomas Simpson of the Government Land Office in 1855. He set a post in mound with trench, pits, charred stake and planted osage orange seeds at the northeast and southwest corners of the mound.

1966. Roy Hansen, surveyor, found an iron rod at this corner and used it as the correct quarter corner for a survey in the Southwest Quarter of Section 5. This was in the center line of the road, in line with field line and fence posts to the east.

September, 28, 1977. We found the iron rod used by Roy Hansen and dug with a backhoe below it. We found a 4 inch spike down 2 feet below the road surface. (below the iron rod) At $3\frac{1}{2}$ feet below the surface we found a 8 inch by 6 inch by 16 inch stone, set on end. (below the spike and iron rod) Ties to all three checked the same.

May, 1978. We set a McLeod County cast iron monument.

March 3, 1988. Corner and all old reference ties have been destroyed due to road and bridge construction. Road has been moved west of corner. We reset the corner using information from 1966 survey by Roy Hansen. He showed corner on a straight line between section corners and had a distance to the southeast corner.

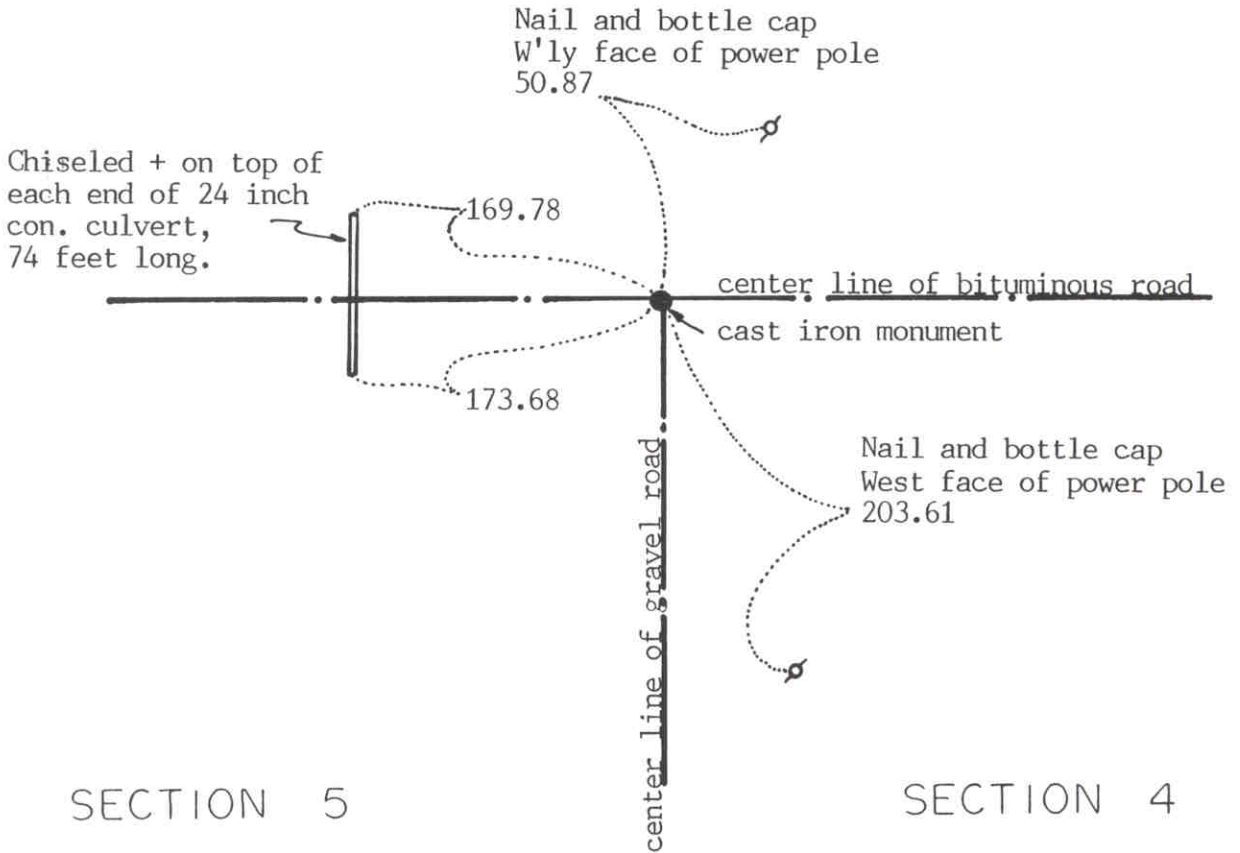
June 14, 1988. We set a cast iron monument and took new reference ties.

We feel this corner has been perpetuated by the iron rod found by Roy Hansen in 1966 and the information in his survey notes.

NORTHEAST corner, Section 5, Township 116 North, Range 30 West

Certificate of Location of Government Corner

SKETCH OF REFERENCE TIES (NO SCALE)



Statement of evidence relative to this corner location on sheet 2

I hereby certify that this document was prepared by me or under my direct supervision.

Willard Pellinen

Willard Pellinen
McLeod County Surveyor
License No. 9626

Date January 2, 1993

OFFICE OF THE COUNTY RECORDER
MCLEOD COUNTY, MINNESOTA.

I hereby certify that this document was filed in this office at 9 o'clock A.M. on the 6th day of January, 1993.

Carmen Ostlie-Juder, County Recorder

By _____, Deputy

Document No. 249898

NORTHEAST corner, Section 5, Township 116 North, Range 30 West

Certificate of Location of Government Corner

August, 1855. This corner was originally established by the General Land Office. Thomas Simpson set a post, erected mound with trench and pits, drove charred stake and planted osage orange seeds at each angle. He measured 1013.1 feet to the southwest corner of Section 33, T 117, R30.

November 21, 1968. McCombs Knutson Associates (Dickman Knutson, county surveyor) set a temporary corner at the center line intersection of the roads. (roads east-west-south)

1969. Emil Rusch, in the Northwest Quarter of Section 4, said when road was rebuilt, they found a stone at the corner. He said the center line intersection is the corner.

1970. Knutson dug for the corner but found no evidence of the government corner. Knutson set a McLeod County cast iron monument at the center line intersection along the standard parallel. Knutson measured 1037.2 feet to the southwest corner of Section 33.

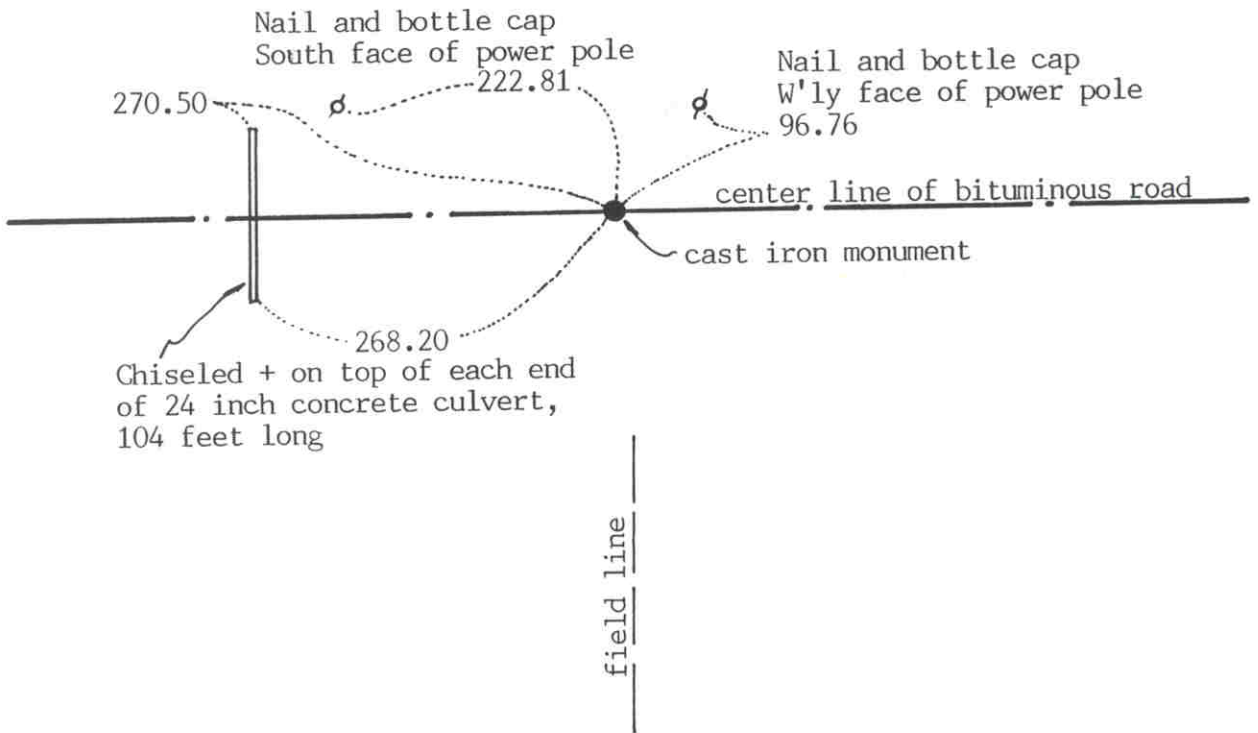
November 6, 1987. We found the monument in good condition down 4 inches below the bituminous surface. All the old reference ties had been destroyed so we took new ties.

December 1, 1992. We found the monument in good condition and checked the reference ties.

The monument set by Knutson is accepted as marking the section corner. We feel the center line intersection of the roads has perpetuated the location of the corner.

Certificate of Location of Government Corner

SKETCH OF REFERENCE TIES (NO SCALE)



Statement of evidence relative to this corner location on sheet 2

I hereby certify that this document was prepared by me or under my direct supervision.

Willard Pellinen
Willard Pellinen
McLeod County Surveyor
License No. 9626

Date January 2, 1993

OFFICE OF THE COUNTY RECORDER
MCLEOD COUNTY, MINNESOTA.

I hereby certify that this document was filed in this office at 9 o'clock A. M. on the 6th day of January, 1993.

Carmen Kottler Gulder, County Recorder

By _____, Deputy

Document No. 249899

NORTH QUARTER corner, Section 5, Township 116 North, Range 30 West

Certificate of Location of Government Corner

November 21, 1968. McCombs Knutson Associates (Dickman Knutson, county surveyor) set a temporary quarter corner on the center line of the east-west road in line with a field line to the south.

1970. Knutson dug for the corner. He found a stone and wood stake about 5-6 feet west of the temporary corner. Knutson set a McLeod County cast iron monument.

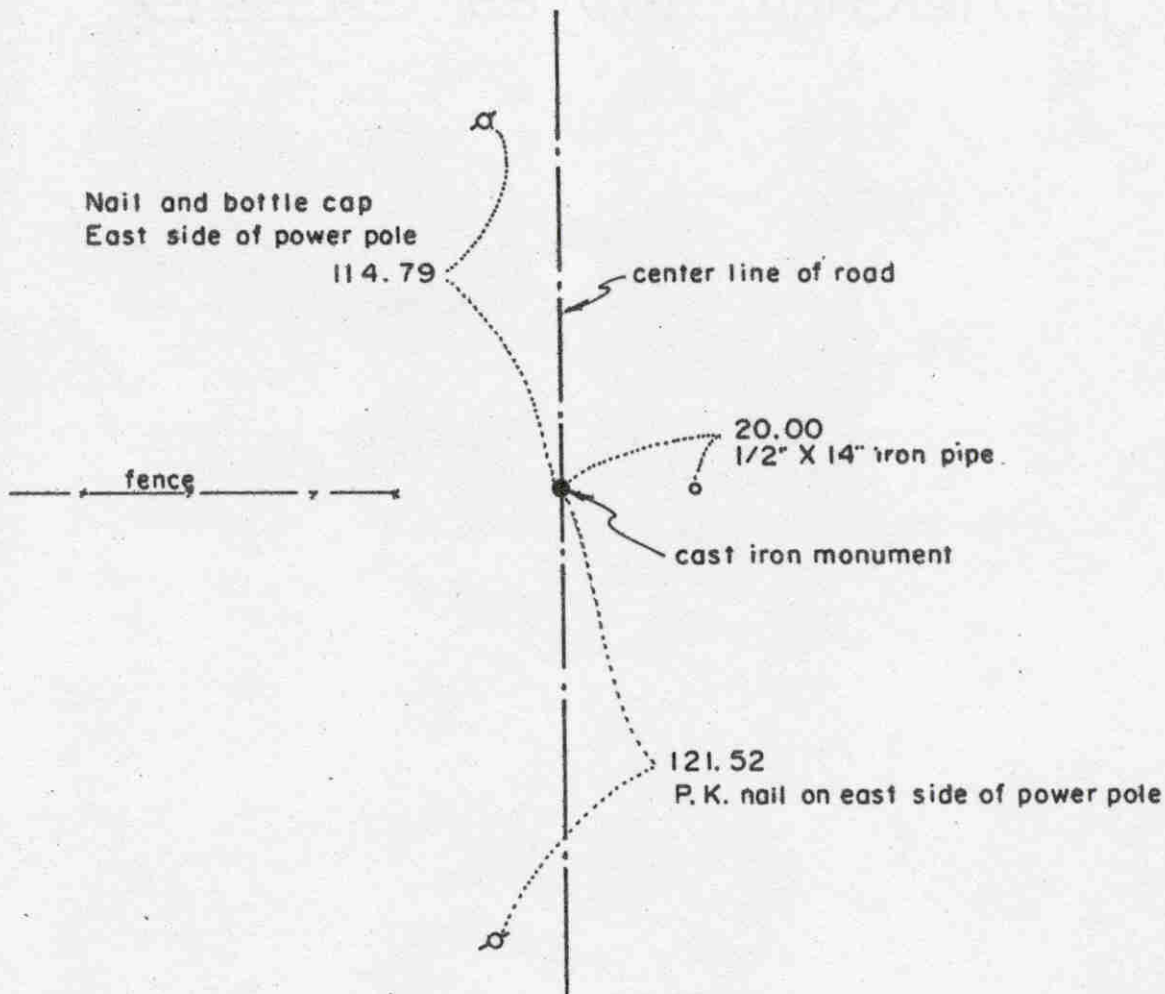
November 10, 1987. We found no ties remaining. We found the monument in good condition down 4 inches below the surface of the bituminous road and took new available reference ties. This corner is within $\frac{1}{2}$ foot of being half way between the northeast and northwest corners of Section 3 and 2.68 feet north of a straight line. The corner is on the standard parallel.

December 1, 1992. We found the monument in good condition and checked the reference ties.

The monument set by Knutson is accepted as marking the quarter corner. It fits occupation lines, the center line of the east-west road and the field line to the south, and it perpetuates the location of an older monument, the stone.

Certificate of Location of Government Corner

SKETCH OF REFERENCE TIES
(NO SCALE)



Statement of evidence relative to this corner location on sheet 2

I hereby certify that this document was prepared by me or under my direct supervision.

Willard Pellinen

Willard Pellinen
McLeod County Surveyor
License No. 9626

Date 2/4/89

OFFICE OF THE COUNTY RECORDER
MCLEOD COUNTY, MINNESOTA.

I hereby certify that this document was filed in this office at 3 o'clock P.M. on the 9th day of Feb, 19 89.

Carmen Osellie, County Recorder

By _____, Deputy

Document No. 226883

Certificate of Location of Government Corner

This corner was originally set by Thomas Simpson of the Government Land Office in 1855. He set post in mound with trench, pits, charred stake and planted osage orange seeds at the northeast and southwest corners of the mound.

In 1966, Roy Hansen, surveyor, found a stone on the center line of the road in line with a fence to the west, and used it as the correct quarter corner for a survey in the Southwest Quarter of Section 5.

July 5, 1978. We dug for the corner with a backhoe. We found the stone used by Roy Hansen in 1966. Stone was 18 inches in diameter and there was a rotted wood hub on the north side of the stone. Top of stone was down only 6 inches below the road surface, wood hub was down 12 inches below the road surface. We took reference ties and removed the stone to make room for a cast iron monument.

On July 13, 1978 we set a McLeod County cast iron monument.

April 5, 1988. Monument had been destroyed by road construction and only one reference tie was left. We reset an iron pipe at the corner using the 1 remaining tie and the fence line to the west, and took new reference ties.

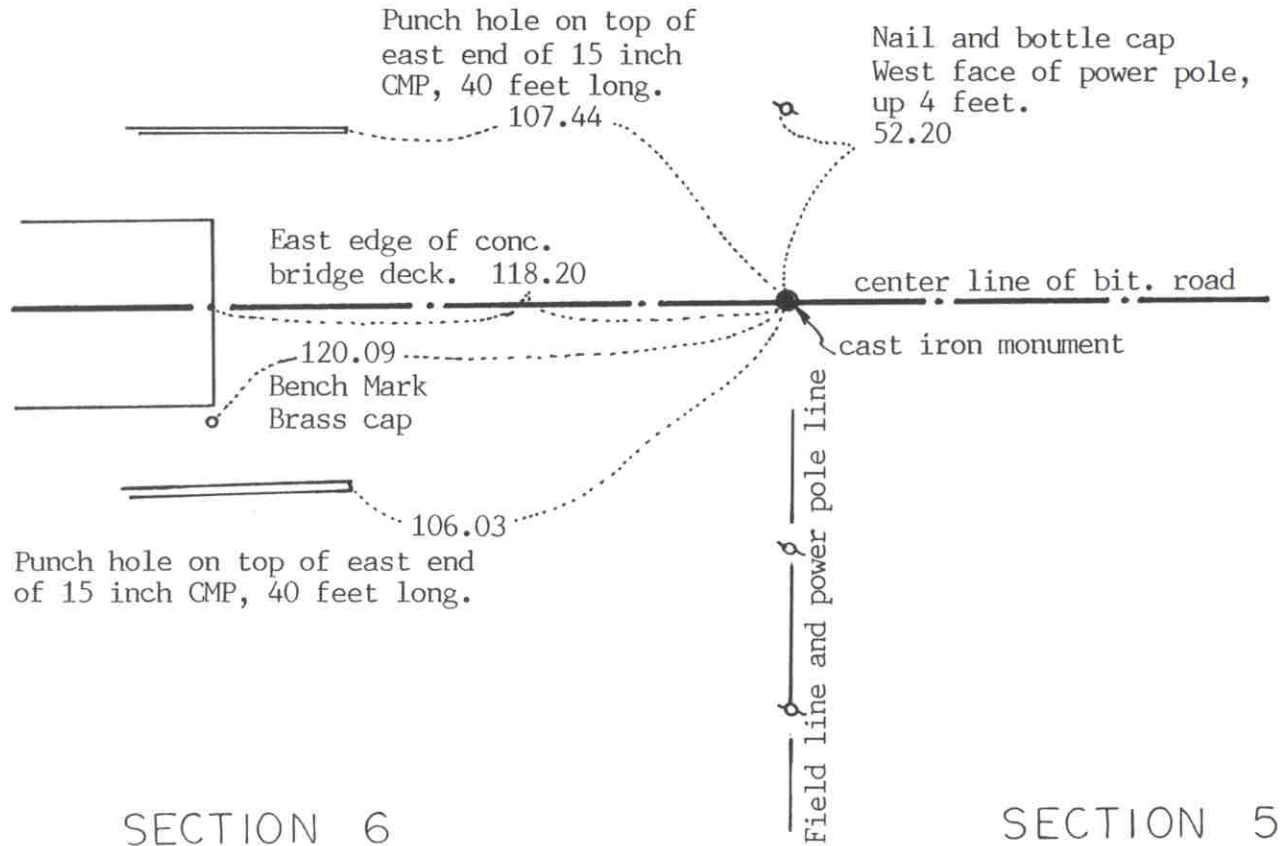
On June 14, 1988, we set a cast iron monument at the corner.

We feel the stone used by Roy Hansen in 1966 has perpetuated the correct location of the east quarter corner.

NORTHEAST corner, Section 6, Township 116 North, Range 30 West

Certificate of Location of Government Corner

SKETCH OF REFERENCE TIES (NO SCALE)



Statement of evidence relative to this corner location on sheet 2

I hereby certify that this document was prepared by me or under my direct supervision.

Willard Pellinen
Willard Pellinen
McLeod County Surveyor
License No. 9626

Date January 2, 1993

OFFICE OF THE COUNTY RECORDER
MCLEOD COUNTY, MINNESOTA.

I hereby certify that this document was filed in this office at 9 o'clock A.M. on the 6th day of January, 1993.

Carmen O. St. Louis, County Recorder

By _____, Deputy

Document No. 249900

Certificate of Location of Government Corner

August 30, 1855. This corner was originally established by the General Land Office. Thomas Simpson set a post and erected mound with trench and pits, charred stake and planted osage orange seeds at each angle. He measured 1021.68 feet to the southwest corner of Section 32, Township 117, Range 30. (on the standard parallel)

November 21, 1968. McCombs Knutson Associates (Dickman Knutson, county surveyor) found an iron pin at the center line of the east-west road, in line with a fence to the south.

1970. Knutson replaced the iron pin with a McLeod County cast iron monument and took reference ties.

April 21, 1982. We found the monument in good condition and took new ties to replace the corner. Corner will be destroyed due to bridge construction.

June 17, 1983. We reset a cast iron monument, with a $\frac{1}{2}$ inch diameter iron pipe below the monument and took new reference ties. We found the corner to be 1024.58 feet east of the southwest corner of Section 32 and 1636.49 feet west of the south quarter corner of Section 32, on line with those corners.

December 1, 1992. We found the monument in good condition and checked the reference ties.

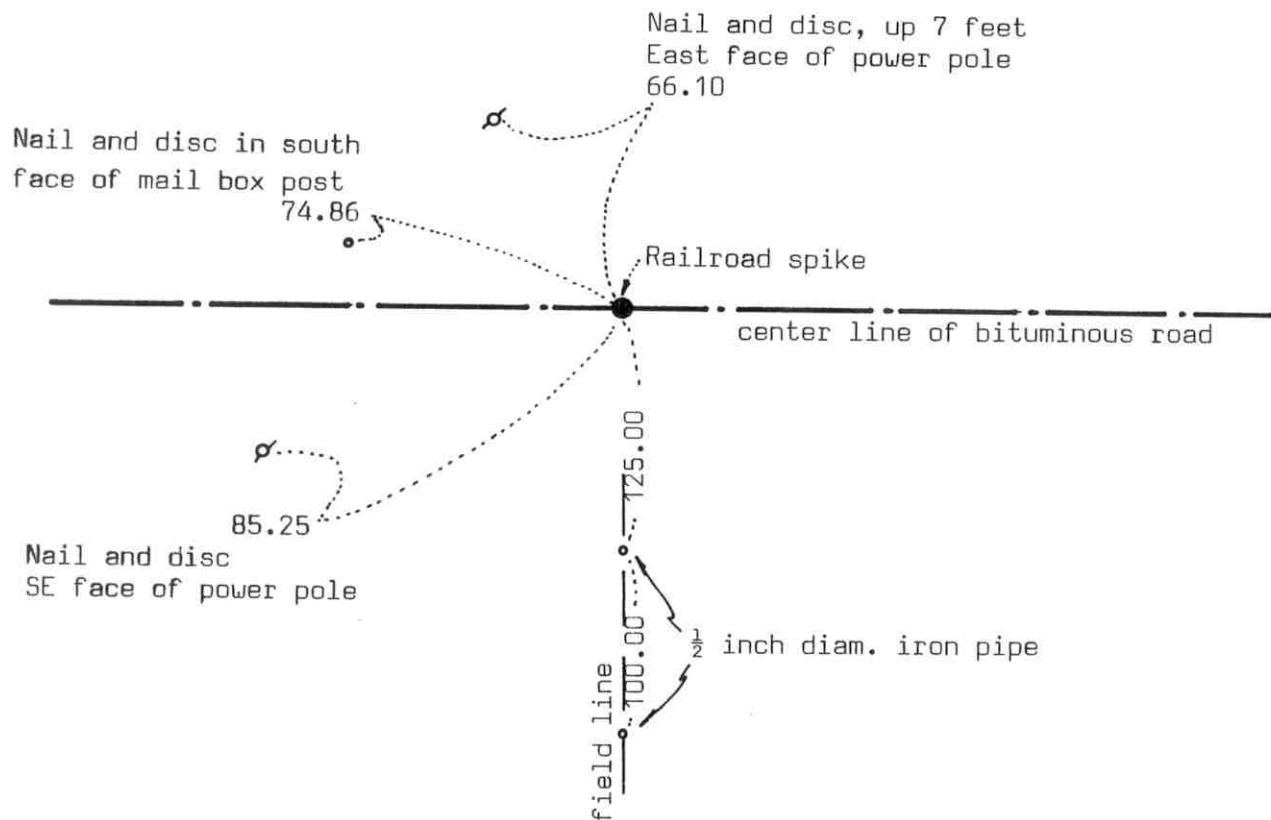
The monument is accepted as marking the section corner. It fits occupation lines, the center line of the east-west road and the fence to the south (now a field and power pole line). It also perpetuates the location of an older monument.

NORTH QUARTER corner, Section 6, Township 116 North, Range 30 West

Certificate of Location of Government Corner

SKETCH OF REFERENCE TIES

(NO SCALE)



Statement of evidence relative to this corner location on sheet 2

I hereby certify that this document was prepared by me or under my direct supervision.

Willard Pellinen

Willard Pellinen
McLeod County Surveyor
License No. 9626

Date Aug. 2, 1990

OFFICE OF THE COUNTY RECORDER
MCLEOD COUNTY, MINNESOTA.

I hereby certify that this document was filed in this office at 9 o'clock A. M. on the 6th day of August, 19 90.

Carmen Ostlie, County Recorder

By Jan Petrick, Deputy

Document No. 234782

Certificate of Location of Government Corner

November 21, 1968. McCombs Knutson Associates (Dickman Knutson, county surveyor) set a spike along the standard parallel in line with a fence running south. The corner falls on the center line of the east-west road. They took reference ties.

19??. Knutson set a McLeod County cast iron monument at the corner. Adjoining land owners stated the fence is on the quarter line.

July 13, 1987. We found the monument in good condition and set $\frac{1}{2}$ inch iron pipes along the field line running south (fence has been removed) for ties to reset the corner after road construction.

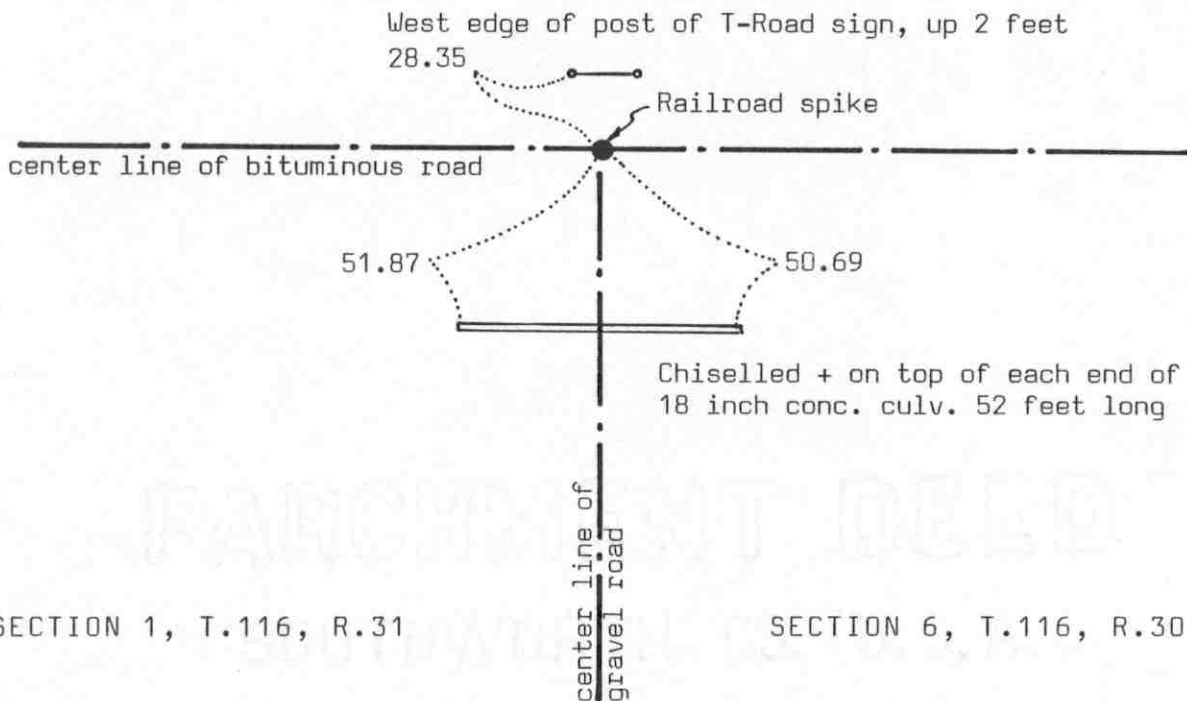
July 6, 1989. We reset the quarter corner and took new reference ties. We checked the line and found the corner falls along the standard parallel, on line between the southwest and south quarter corners of Section 31, Township 117 North, Range 30 West.

NORTHWEST corner, Section 6, Township 116 North, Range 30 West

Certificate of Location of Government Corner

SKETCH OF REFERENCE TIES (NO SCALE)

SECTION 31, TOWNSHIP 117, RANGE 30



Statement of evidence relative to this corner location on sheet 2

I hereby certify that this document was prepared by me or under my direct supervision.

Willard Pellinen
 Willard Pellinen
 McLeod County Surveyor
 License No. 9626
 Date July 21, 1990

OFFICE OF THE COUNTY RECORDER
MCLEOD COUNTY, MINNESOTA.

I hereby certify that this document was filed in this office at 9 o'clock A. M. on the 1st day of August, 1990.

Carmen Ostlie, County Recorder
 By _____, Deputy
 Document No. 234717

NORTHWEST corner, Section 6, Township 116 North, Range 30 West

Certificate of Location of Government Corner

The government notes show this corner was set in 1855 by John Ryan. He intersected the standard parallel 18 chains east of standard corner. He set post for closing corner, deposited charcoal, dug pits and trench, built mound and planted osage orange seeds at the corners of the mound.

November 23, 1968. McCombs Knutson Associates found a 2 inch diameter iron pipe down 3 feet below the road surface, a wood stake beside the pipe. They took reference ties. The pipe was on the center line intersection of roads south, east and west.

19???. Knutson set a McLeod County cast iron monument.

August 15, 1984. We set a new monument on the standard parallel, 13.31 feet south of the old monument and took reference ties.

July 6, 1989. The monument and reference ties had been destroyed by road construction. We set a railroad spike at the corner using our section measurements. The road has been move south to the standard parallel so the corner is now on the center line intersection of the roads.

PARCHMENT DEED

SOUTHWORTH CO. U.S.A.

100% COTTON FIBER

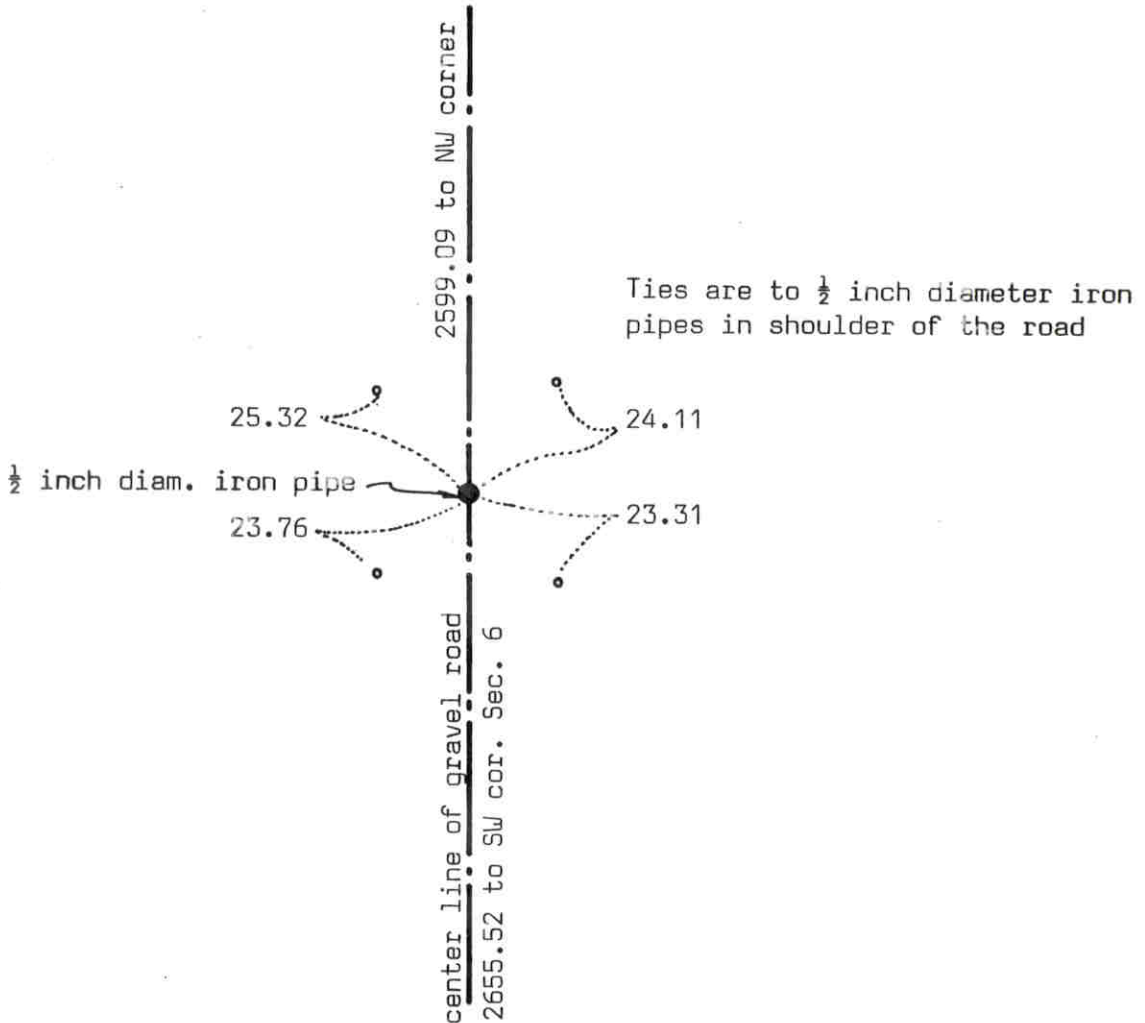
WEST QUARTER corner, Section 6, Township 116 North, Range 30 West

Certificate of Location of Government Corner

SKETCH OF REFERENCE TIES (NO SCALE)

SECTION 1, TOWNSHIP 116, RANGE 31

SECTION 6, TOWNSHIP 116, RANGE 30



Statement of evidence relative to this corner location on sheet 2

I hereby certify that this document was prepared by me or under my direct supervision.

Willard Pellinen
Willard Pellinen
McLeod County Surveyor
License No. 9626

Date July 23, 1990

OFFICE OF THE COUNTY RECORDER
MCLEOD COUNTY, MINNESOTA.

I hereby certify that this document was filed in this office at 9 o'clock A.M. on the 1st day of August, 1990.

Carmen Ostlie, County Recorder

By _____, Deputy

Document No. 234718

Certificate of Location of Government Corner

1855. John Ryan of the General Land Office set a post, deposited charcoal, dug pits and trench, built mound and planted osage orange seeds at the corners of the mound.

July, 1978. McCombs Knutson Associates (Dickman Knutson, County surveyor, dug for the corner, John Tupa from Hutchinson with a backhoe. They found nothing.

September 11, 1985. We measured the west line of Section 6 and set a temporary quarter corner on the center line of the road, tree line to the west.

July 12, 1989. We set the corner by lost methods, using a proration of government distances along the west line of Section 6. A fence line running west, $\frac{1}{4}$ mile south, falls within 1 foot of being on the $\frac{1}{16}$ line and a fence corner near the center of the section is within 3 feet of the center. The corner falls on the center of the north-south road.

There being no other evidence of the corner, we feel the lost position is the correct location for the corner.